



BLP  
INSURANCE

# BOPAS DURABILITY ASSESSMENT METHODOLOGY

*BUILD OFFSITE PROPERTY ASSURANCE SCHEME*

Jeff Maxted – Director of Technical Consultancy

BLP  
IS MANAGED  
BY **THOMAS  
MILLER**

**£3.5bn**

Construction BLP insured in 2014

**€200m**

Capacity (Any One Structure)

**AA**

S&P rating of our insurer  
Allianz Global Corporate & Specialty

**100%**

Approval by the major UK lenders

**30yrs**

Providing construction insurance

**125yrs**

Thomas Miller, our parent company,  
has been providing insurance

- The BLP technical team manages the technical risk aspects of new and refurbishment projects to assess compliance with UK technical standards and good building practice.
- Since 1999 BLP have undertaken technical checks and inspections on developments (residential and commercial) with a construction value in excess of £10,000,000,000.
- In addition, for many years BLP have been providing consultancy services in the form of life cycle cost (LCC) planning for a number of RSL and private developers.

# Clients & beneficiaries of our insurance



KNIGHT DRAGON

FINCHATTON







# Insulated concrete formwork systems







# Components shipped to the UK



# Guess the 'modern method'





Reduce your carbon footprint  
and cut your heating and hot water  
bill by up to 70%



- home
- about us
- how it works
- the benefits
- contact us



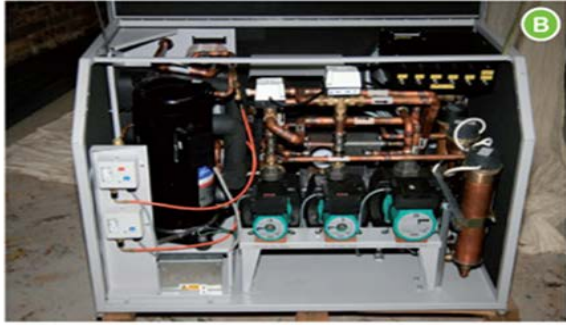
**A**

A whole roof energy collector system that will provide heating & hot water all year round.

**Main Components.**

- A** Endothermic Roofing system
- B** S.E.P - Solar Energy processor. This has a foot print size of 1000mm x 600mm x 650mm high.
- C** Thermal Heat Storage Tanks.

Stage 1 - Thermal - [CLICK HERE TO SEE THIS PROCESS](#)  
 Stage 2 - Heat Pump - [CLICK HERE TO SEE THIS PROCESS](#)  
 Stage 3 - Heat Delivery - [CLICK HERE TO SEE THIS PROCESS](#)



**B**



cold store	
2/3 bed	3/4 bed
910 ltr	1140 ltr
12430x964x899	1674x1064x823



hot store	
2/3 bed	3/4 bed
2280 ltr	3640 ltr
1979x1369x1032	2588x1369x1229

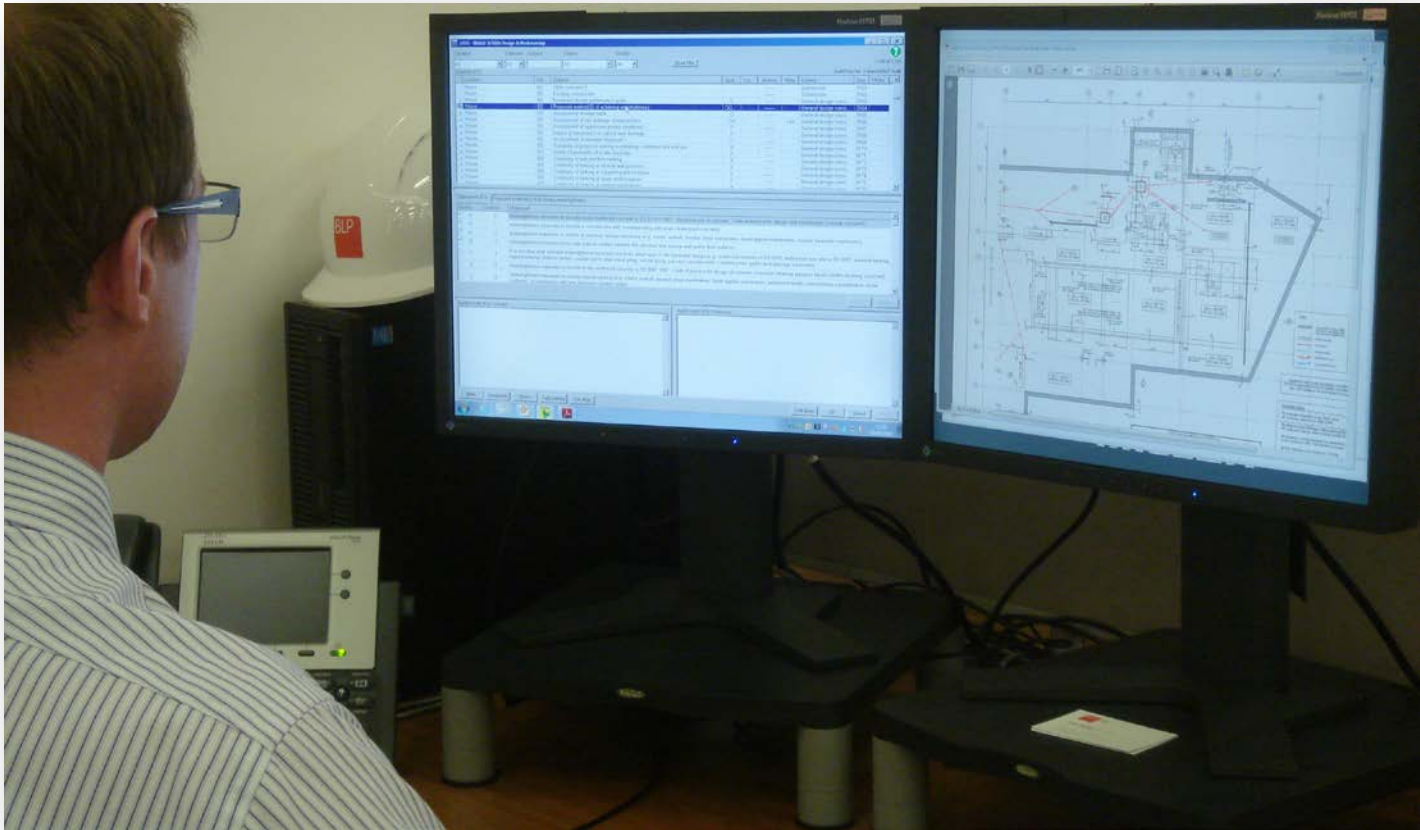
All temperatures shown are for example only



## **BLP's standards**

Existing industry standards embraced in:

- Approved Documents
- British Standard's & Codes of Practice
- BRE Reports and Papers
- Trade Association Best Practice Guidance
- 3<sup>rd</sup> Party Certifications etc.



- What the building is made from
- How put together
- In service conditions
- Meeting functional requirements
- Limits; height, exposure, loads, use
- Weathertightness
- Thermal performance
- Fire
- Maintenance requirements





- Chronic shortage of labour in traditional construction
- Shortage of traditional construction materials
- Performance gap between design and as built
- Increase in defects in traditional construction



**Thank you**  
**Any questions?**

**T: 020 7204 2424**  
**[jeff.maxted@blpinsurance.com](mailto:jeff.maxted@blpinsurance.com)**  
**[www.blpinsurance.com](http://www.blpinsurance.com)**