

BOPAS BREAKFAST BRIEFING

Terry Mundy – Lloyd's Register

Jeff Maxted – BLP Insurance

18th September 2019



Founded in 1760:

First Engineering standard in world 1765

First design standard using composite materials

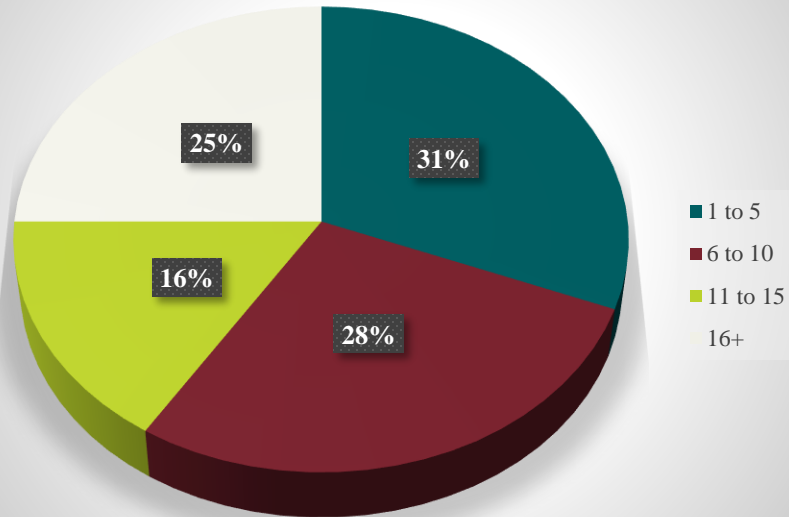
First design and construction standards for
nuclear power stations

First to develop a BIM Level 2 accreditation
scheme

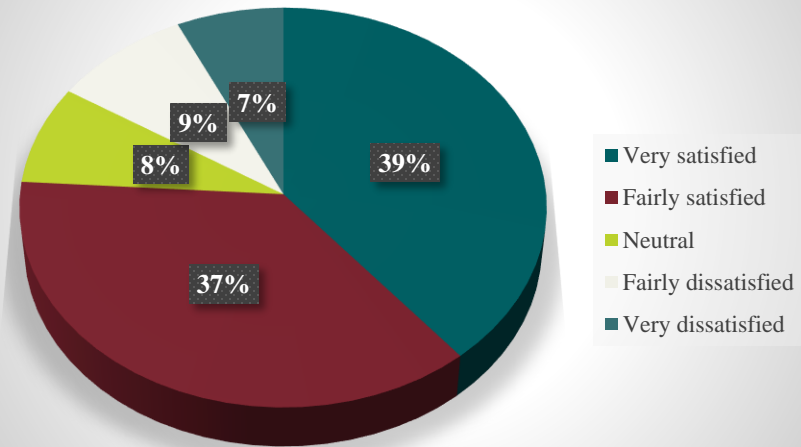
BOPAS

HBF Survey 2018

Reported Problems



Satisfaction Levels



Top 8 Reasons why people chose a new build in order of preference:

Location

The design and look of the property

The price of the property

The size of the property

Close to family and friends

Number of bedrooms

Being close to work

The reputation of the builder

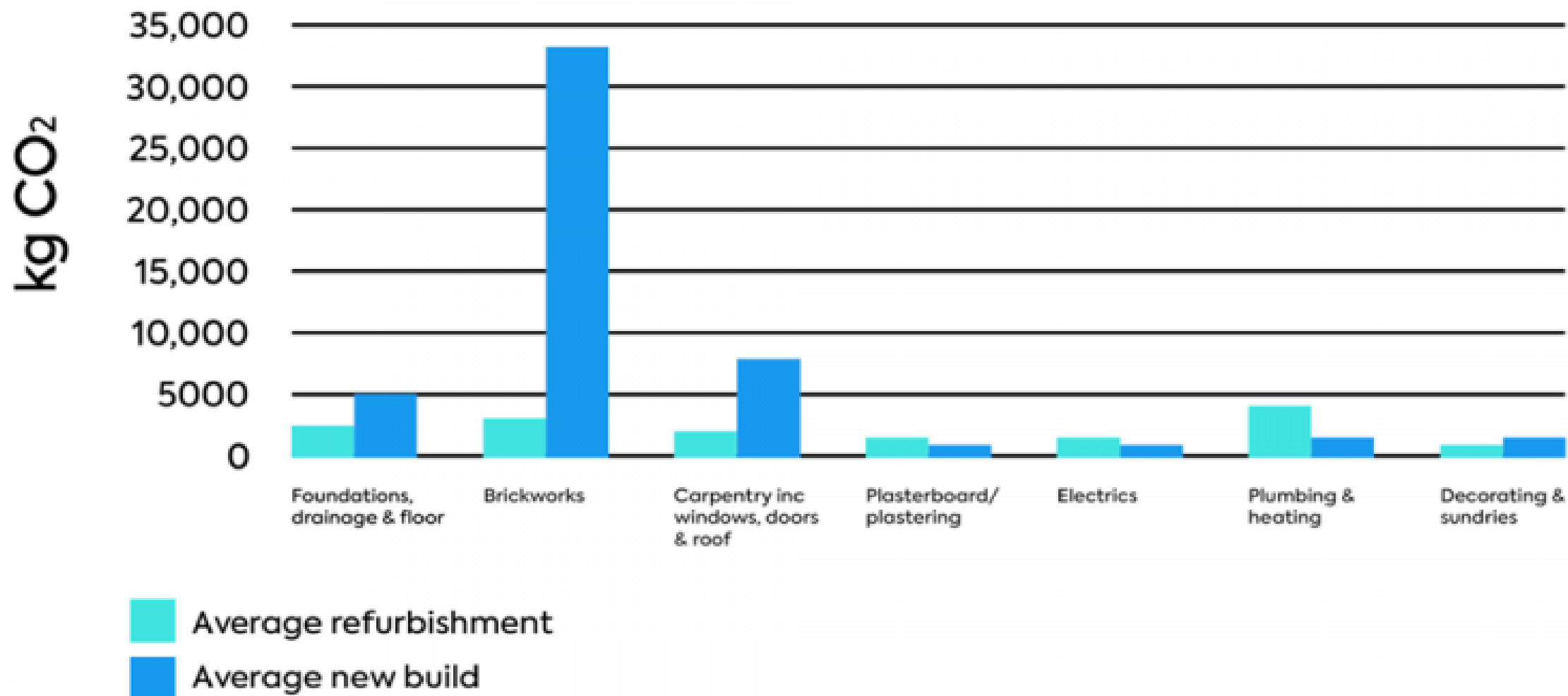
This survey recorded 35% dissatisfaction with the builders performance once the homeowner had moved in

Traditional New Build CO2 Footprint 50 to 80 Tonnes/ House

BOPAS

Buildoffsite Property
Assurance Scheme

Distribution of embodied CO₂



The construction industry is the UK's largest user of natural resources, and produces huge amounts of waste.

Each year around:

400

MILLION TONNES
of material is used

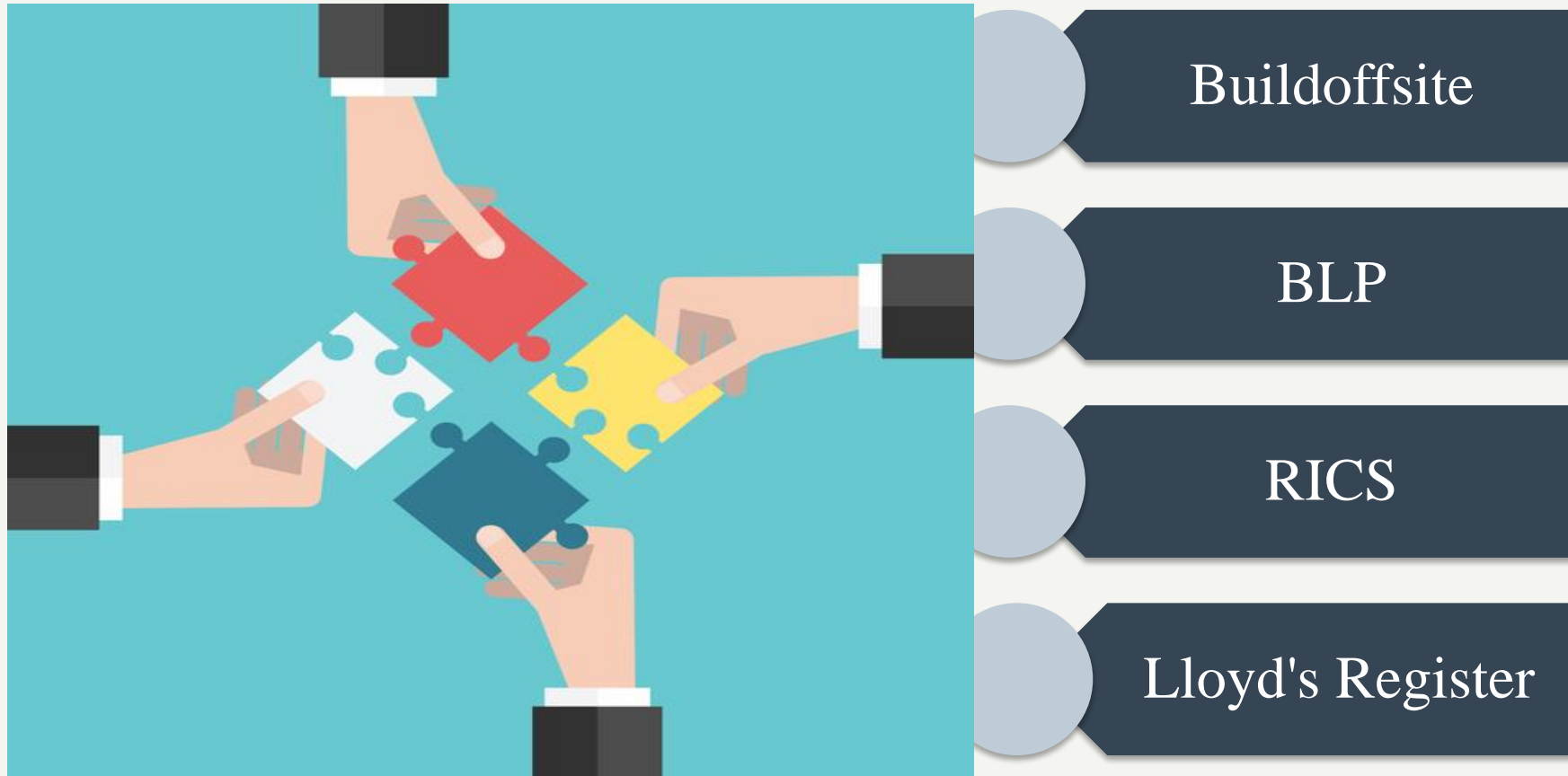
100

MILLION TONNES
of waste is
produced – more
than one-third
of the UK's annual
waste

25

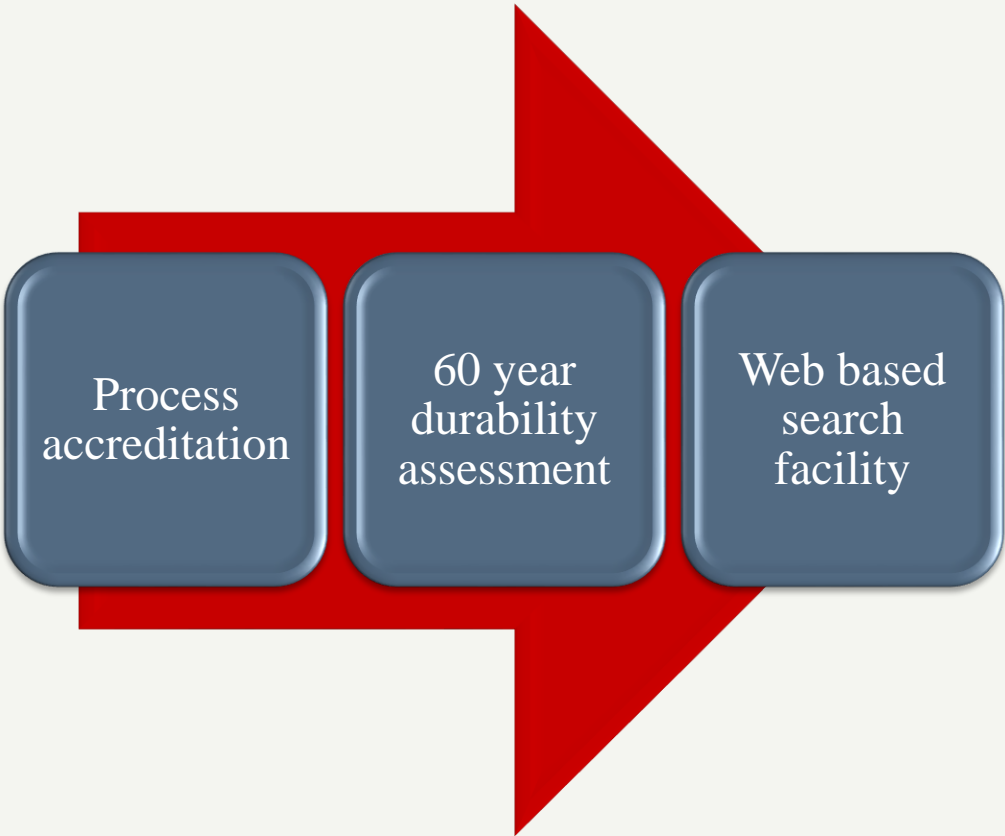
MILLION TONNES
of construction
waste is disposed
to landfill

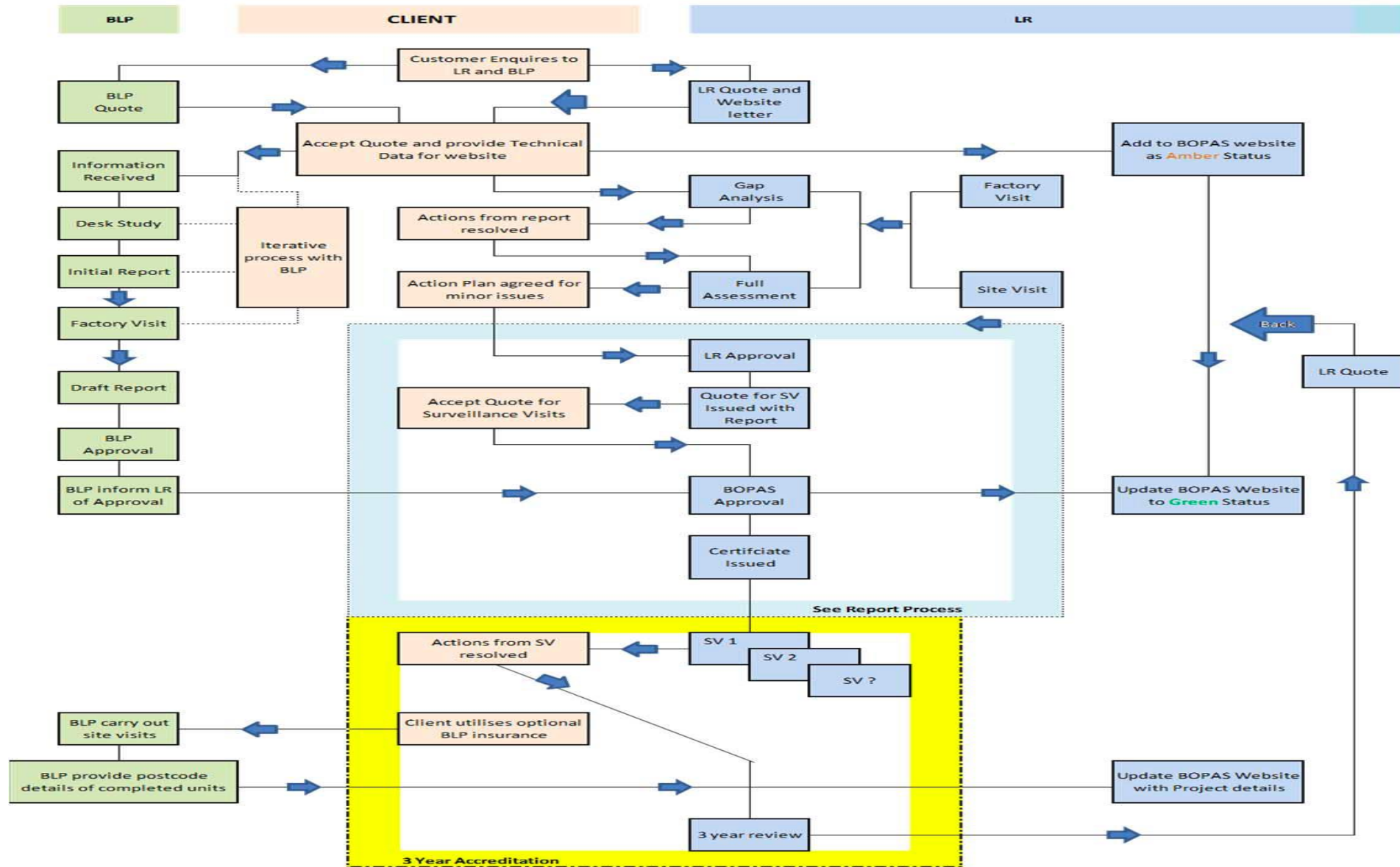
The BOPAS Partnership





What is involved?





Assurance of Golden Thread Spanning Design, Manufacture and Construction





Organisation and Structure

HR and Training

Configuration activities

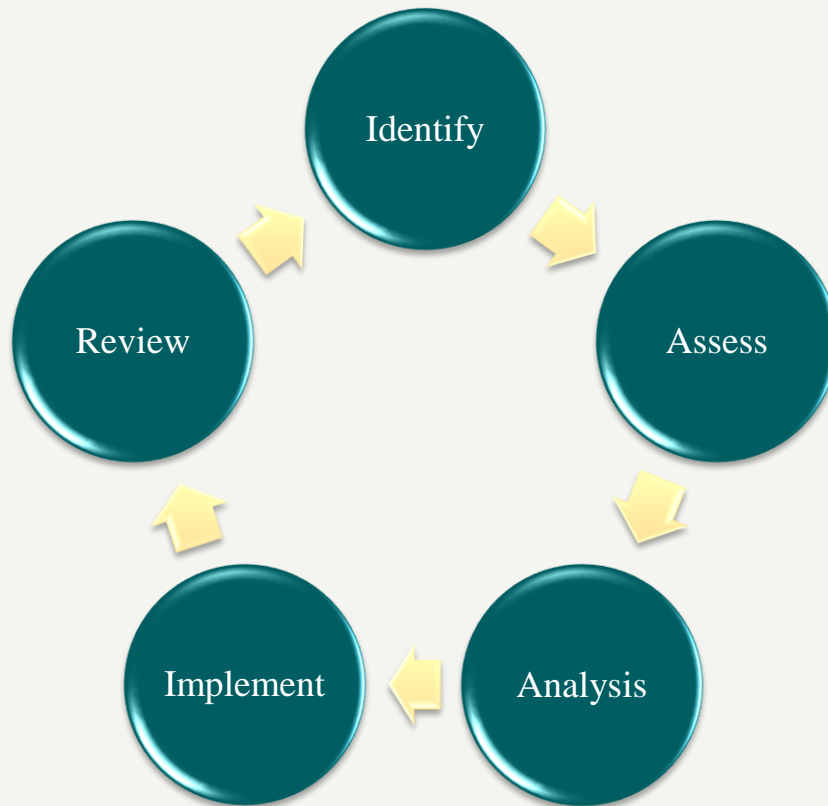
Procurement and Subcontracting Management

Process Control

Risk Management

Process monitoring and improvement

Risk Management Process



‘Good risk management fosters vigilance in times of calm and instills discipline in times of crisis’

Dr Michael Ong

‘Risk varies inversely with knowledge’



Constantly updating assessment principles:

- Cyber security
- BIM assessment
- Moisture control plans
- Follow on trades management control processes
- Handover manual requirements
- Bench marking post handover quality
- deficiency management control

MTC review and feedback

Accredited BOPAS Provider View of the Assessment Process



SIG Building Systems:

'BOPAS took us on a journey which made us analyse the business in a way we had never done before, it presented many questions, some of which we would have not thought to ask'

BOPAS has created the fundamentals behind our business model, is now an integral part of our culture & defines the way we operate on a day to day basis'

B & K Structures:

Gaining BOPAS certification has had a positive impact on our business. This has been not only in the form of continual improvement through audit and review of our management systems, but has also given key stakeholders complete confidence in all aspects of our delivery.

BOPAS certification has created greater business opportunities for us in a very challenging market and assured the integrity of our work for years to come.

Stewart Milne Group:

BOPAS accreditation has been invaluable to our company. Not just in terms of giving comfort to the major mortgage lenders and insurers that our Sigma II Build System is durable for at least 60 years but in providing advice on our systems and processes which has enabled us to fine tune how we operate making us more effective as a business and ensuring we stand out in the industry".

BOPAS DURABILITY ASSESSMENT



Launched in 1999 to provide LDI to the Commercial Sector and moved into the Housing Market in 2004

One of the leading insurance / warranty providers in the UK

Policies Underwritten by Allianz and Scor

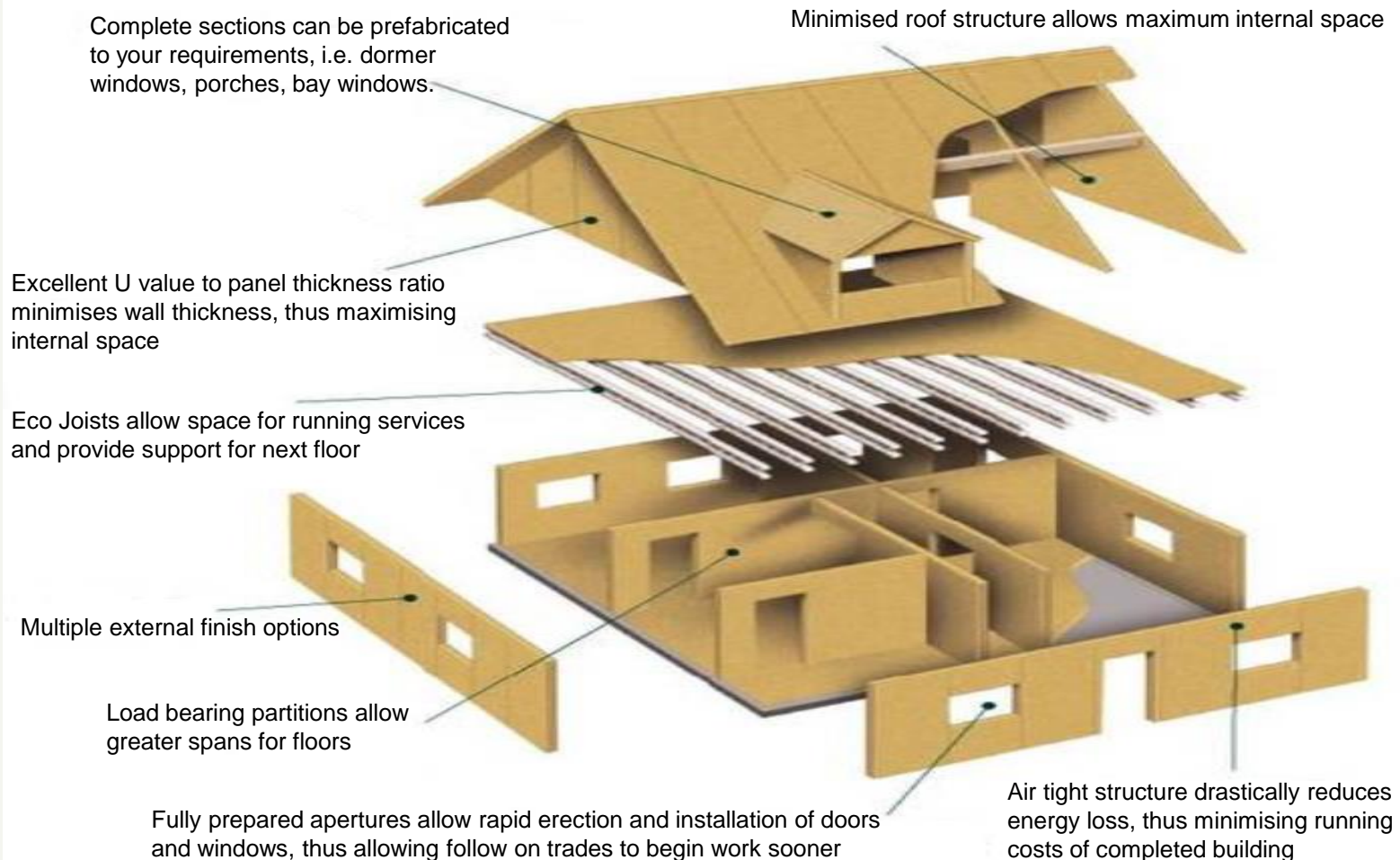
In house technical and consultancy team

Participating in MHCLG Offsite Housing Review

Durability Assessment – height, exposure & loading



Durability Assessment – the detail





MODULAR / VOLUMETRIC– Can be BOPAS accredited



Panelised – Can be BOPAS accredited



Hybrid – can be BOPAS accredited



Insulated Concrete Formwork (MMC – Non BOPAS)



Urban Splash

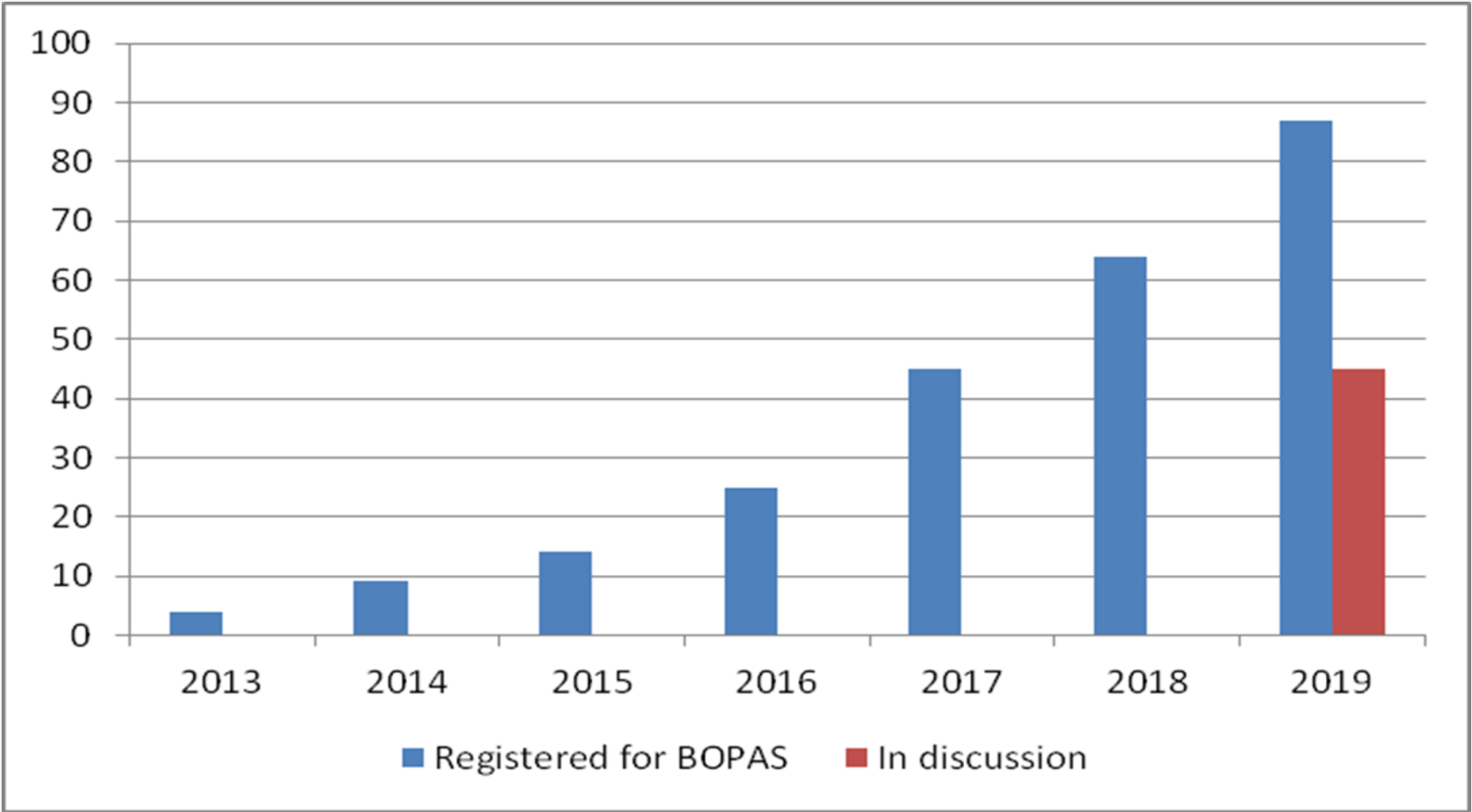


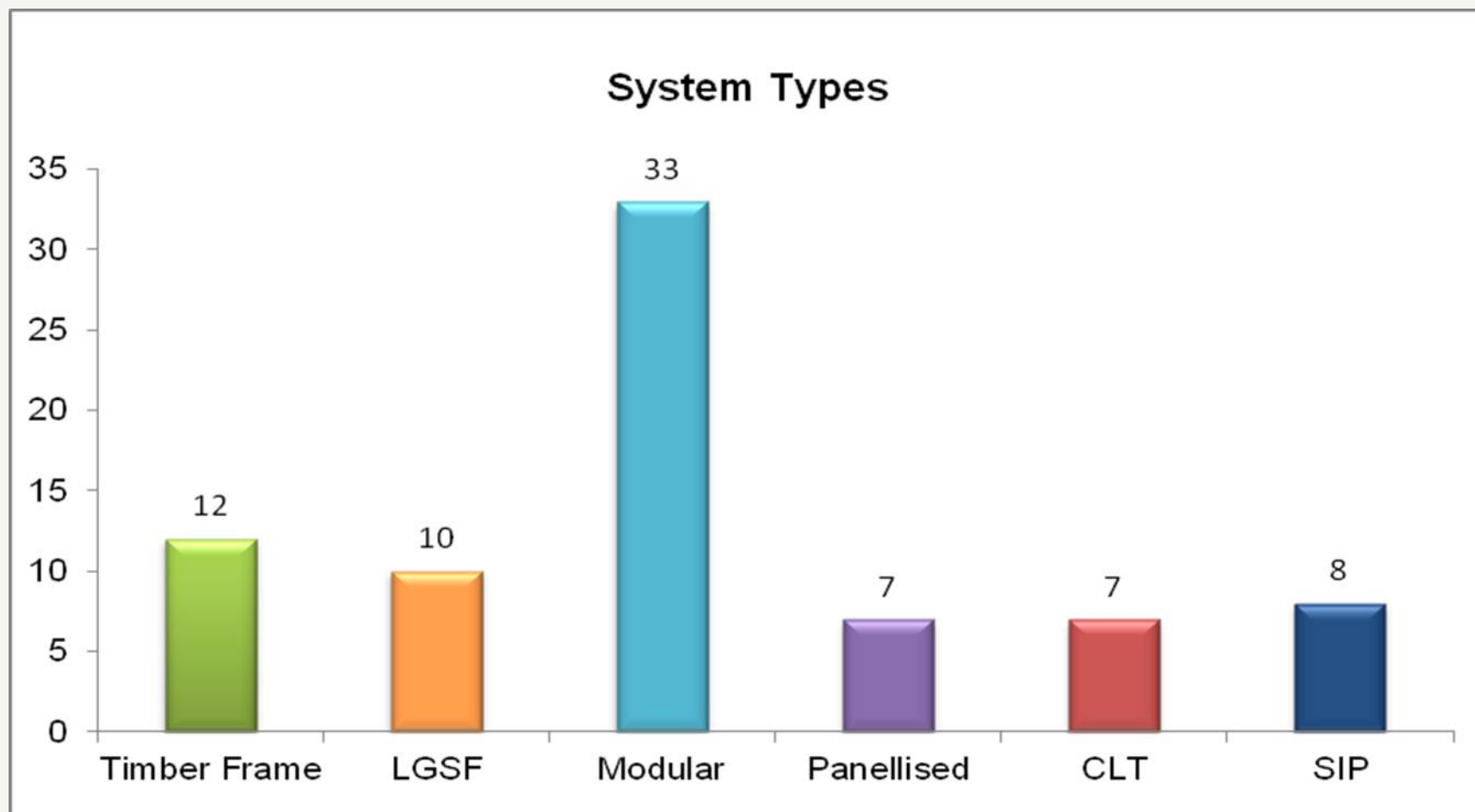






Growth since launch in 2013



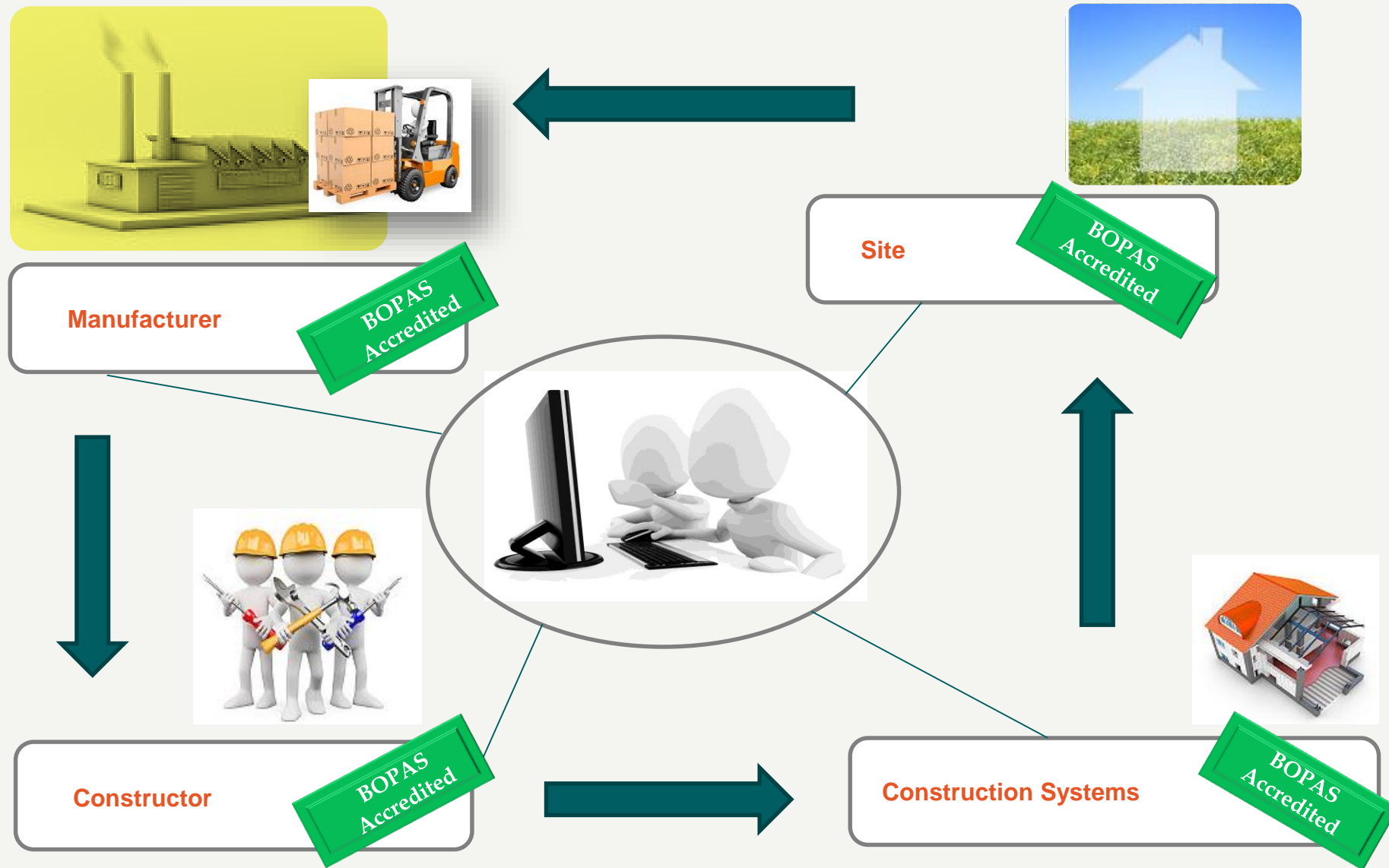


The Housing Minister & MHCLG is supporting a joint working group on modern methods of construction, bringing together industry, lenders, valuers, warranty providers and others to work together to increase knowledge of and confidence in new technology being used in housebuilding

Chaired by Mark Farmer the group has 3 main aims:

- 1 - Evolution of a more unified quality assurance environment for MMC**
- 2 - Creation of single independently curated hub for MMC terminology**
- 3 – Open source for MMC data**

BOPAS Purpose



Key: ● Approved ● Under Assessment ● Not Assessed

Glosford SIPs	<div><div>●</div> Constructor</div> <div><div>●</div> Designer</div> <div><div>●</div> Manufacturer</div>	SIPS
Greencore Construction	<div><div>●</div> Constructor</div> <div><div>●</div> Designer</div> <div><div>●</div> Manufacturer</div>	
H+H and SIG Offsite	<div><div>●</div> Constructor</div> <div><div>●</div> Designer</div> <div><div>●</div> Manufacturer</div>	SIG I-House System incorporating Celcon Elements from H+H
Hadham Construction Ltd	<div><div>●</div> Constructor</div> <div><div>●</div> PM Designer</div> <div><div>●</div> PM Manufacturer</div>	HadFrame System
Housing Homes Ltd	<div><div>●</div> Constructor</div> <div><div>●</div> Designer</div> <div><div>●</div> Manufacturer</div>	MiSP system
Ideal Modular Homes	<div><div>●</div> Constructor</div> <div><div>●</div> Designer</div> <div><div>●</div> Manufacturer</div>	


Technology or Product name ▼	Approval status ▼
Fusion Insulated Steel Frame Building System	● Approved
HadFrame System	● Approved
Hybrid Modular Construction	● Approved
i-FAST	● Approved
i-SIP	● Approved
Ideal Volumetric System	● Under Assessment
ILKE Homes System	● Approved
Insulshell closed panel structural timber system	● Approved
Integrated steelframe modular system	● Approved
MassBespoke™	● Under Assessment
MiSP system	● Under Assessment
Modular Eco-Tech Construction System	● Approved

What is BOPAS accreditation looking to achieve?

The scheme provides an assurance of the integrity of offsite construction systems delivered in a consistent and competent manner conforming to contract specifications.

The BOPAS assessment involves all aspects of the business operation including systems processes and procedures, together with handover interfaces, from design through offsite manufacture and construction/assembly to client handover; all being tested against the arrangements for sustaining quality delivery, dealing with environmental and project changes and the control measures that are applied to mitigate delivery risks.

Search for BOPAS sites and properties on our interactive UK map



Search for a BOPAS site or property

Select one or more fields to locate a site or property. Or, click 'search' to see all UK-wide locations.

Full or partial postcode

Site name

Select a county

Select a technology

Select a constructor

Search BOPAS now

A Summary



Risk Based approach

Transparency of process and accreditations

Balance between rigour and pragmatism

Requirement for continuous improvement

Verifies informed oversight at critical interfaces – Design-manufacture -Construction

Accreditation scheme essential to maintenance of Offsite Industry quality standards

Thank you

Any questions?

terrymundy2@icloud.com

jeff.maxted@blpinsurance.com