



WS

June 2019



International expertise

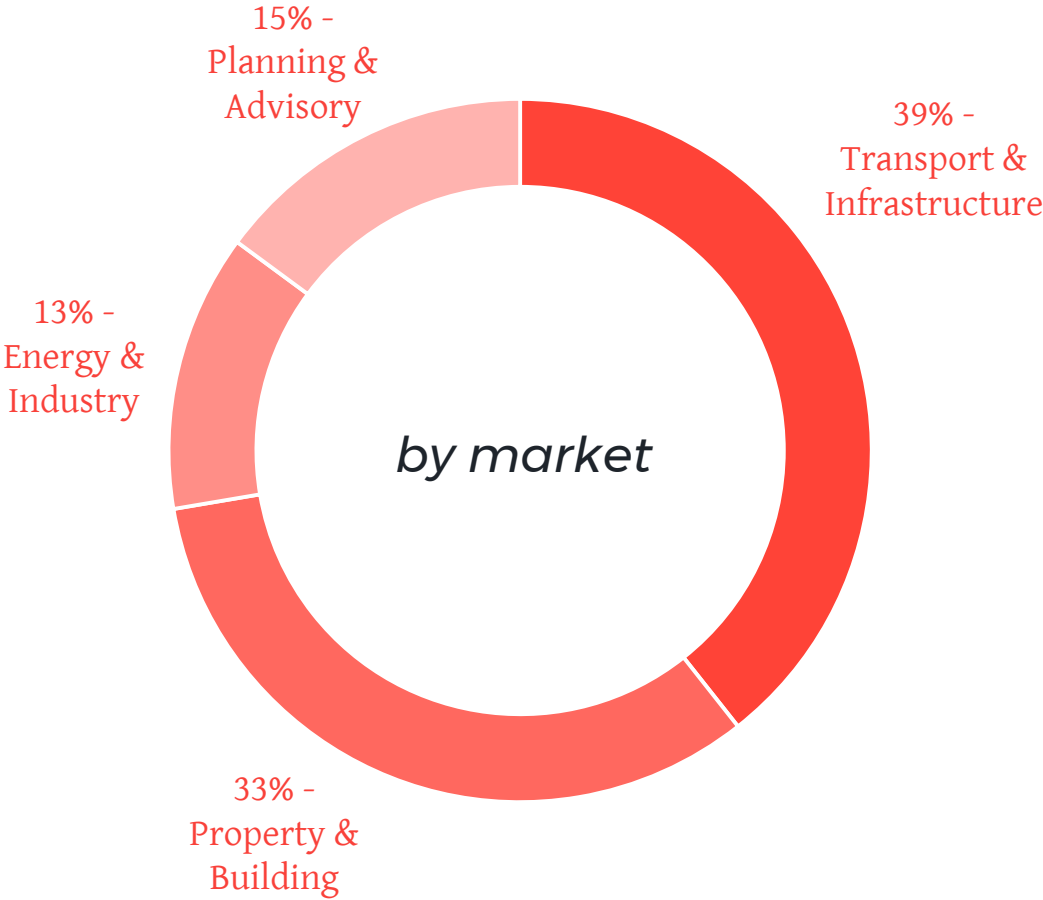
Our local experts can tap into our knowledge bank around the world to explore and solve the most complex problems

42,000 global employees
7,800+ UK and Ireland employees
500 offices
40 countries

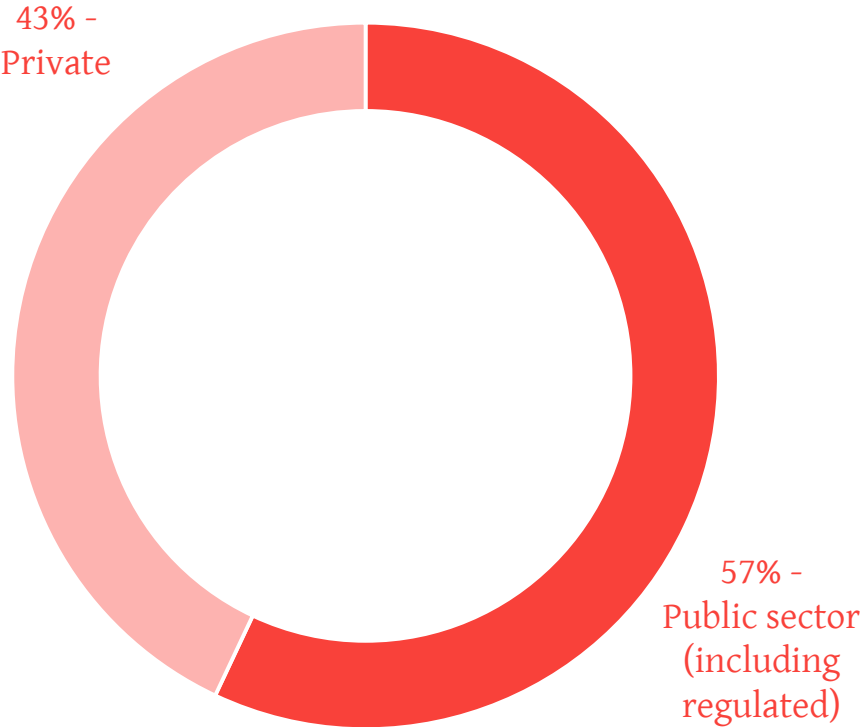


Our UK business

Active in four key market segments



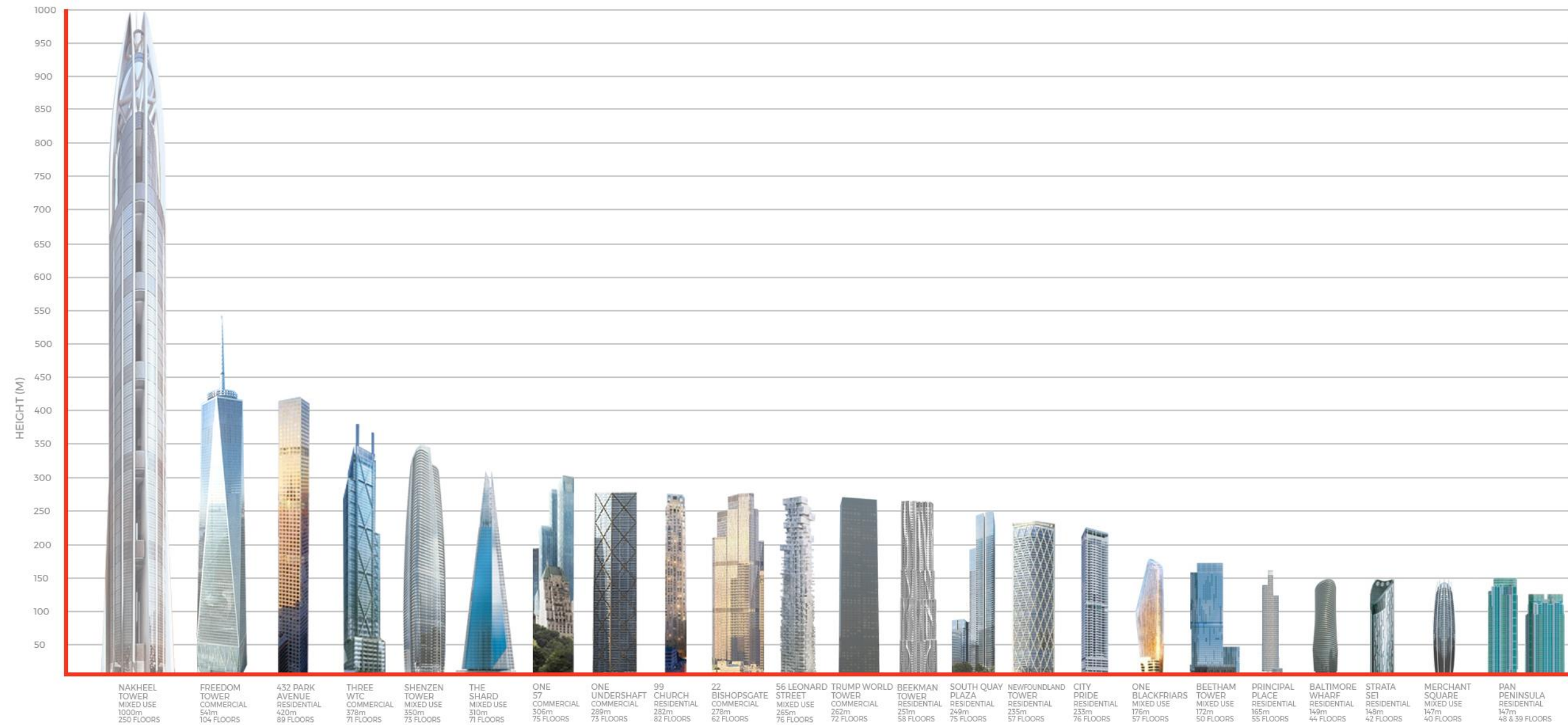
Expertise in public and private sector



What we do



Commercial and residential



Aviation





Rail and Transport

Stadia



Modular & Off-site



Offsite
Manufacturing
Campaign

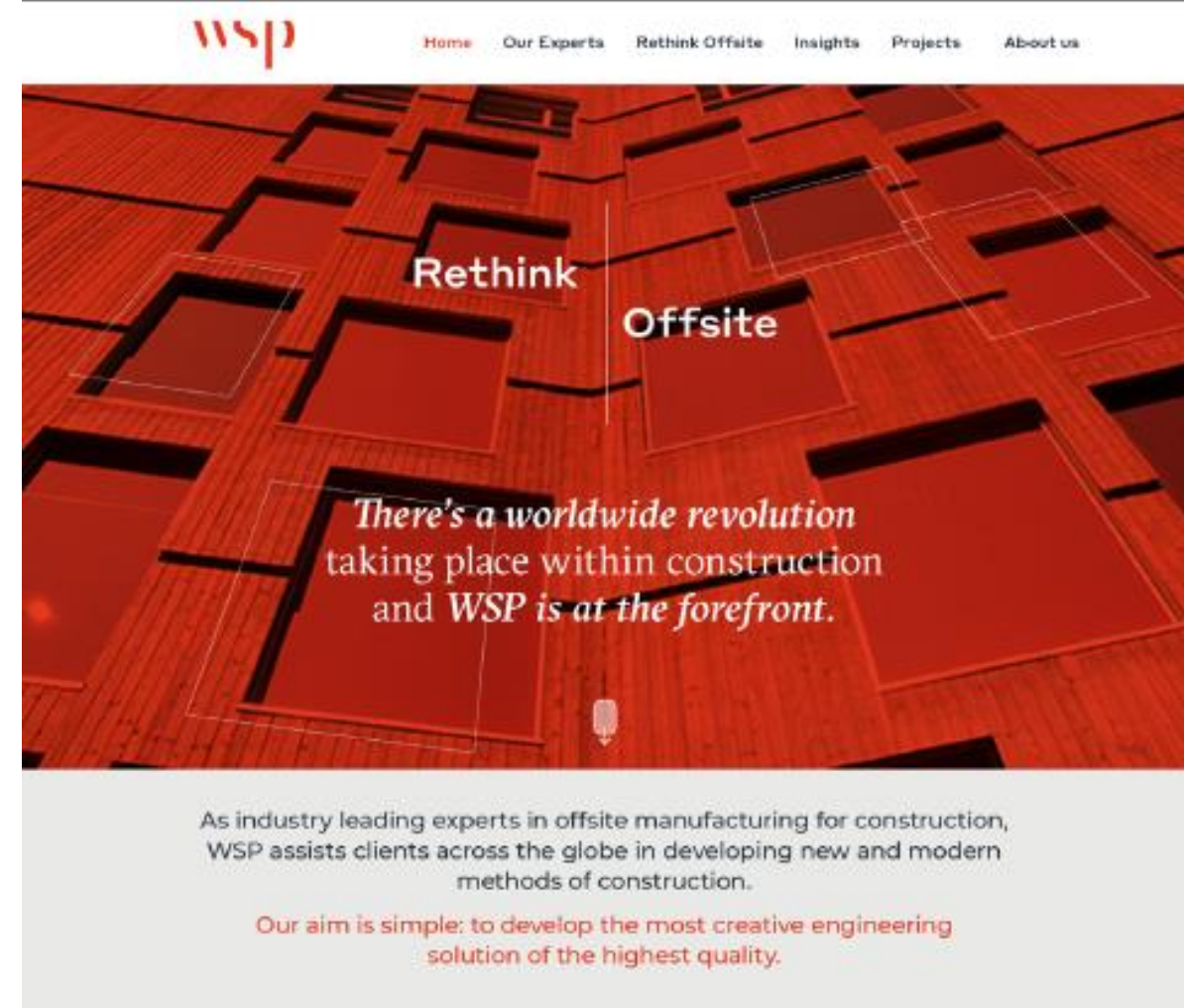
Rethink

Offsite

MICROSITE

We have developed a dedicated microsite to link up our business knowledge-share; including:

- Series of thought-leadership blogs
- Project case studies
- 6 stages of the project lifecycle
- Global expert list and contacts
- Animation explaining 4 types of offsite
- Outlining benefits of using offsite



OUR CLIENTS ARE MANDATING OFFSITE

Balfour Beatty

- Committed to reducing onsite activity by 25% by 2025



- Created Berkeley Modular to produce a volumetric modular housing solution specifically for the Berkeley Group



- Committed to Design for Manufacture & Assembly (DfMA) by producing 70% of construction offsite, which claims will enable a 60% improvement in productivity and a 30% saving on time



- UK Government has called for industry evidence to help them set out a new approach to building, to be adopted across government departments where it presents value for money

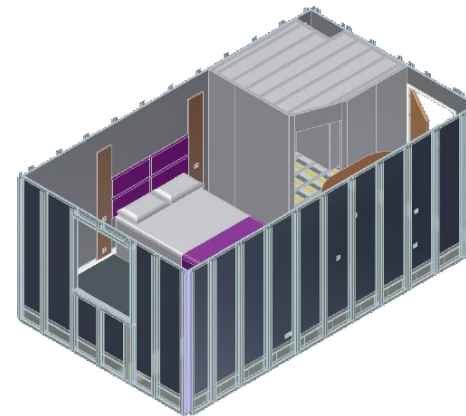
Volumetric Modular & Digital Case Studies

Volumetric Modular Systems



UNITE Modular System

- In 2006-2007 WSP developed a volumetric modular system which is capable of stacking up to 14 storeys
- Based on light gauge cold-formed steel
- System is process orientated and designed for fast site installation. Typically > 20 modules installed per day
- ~ 20 UNITE buildings up to 2012



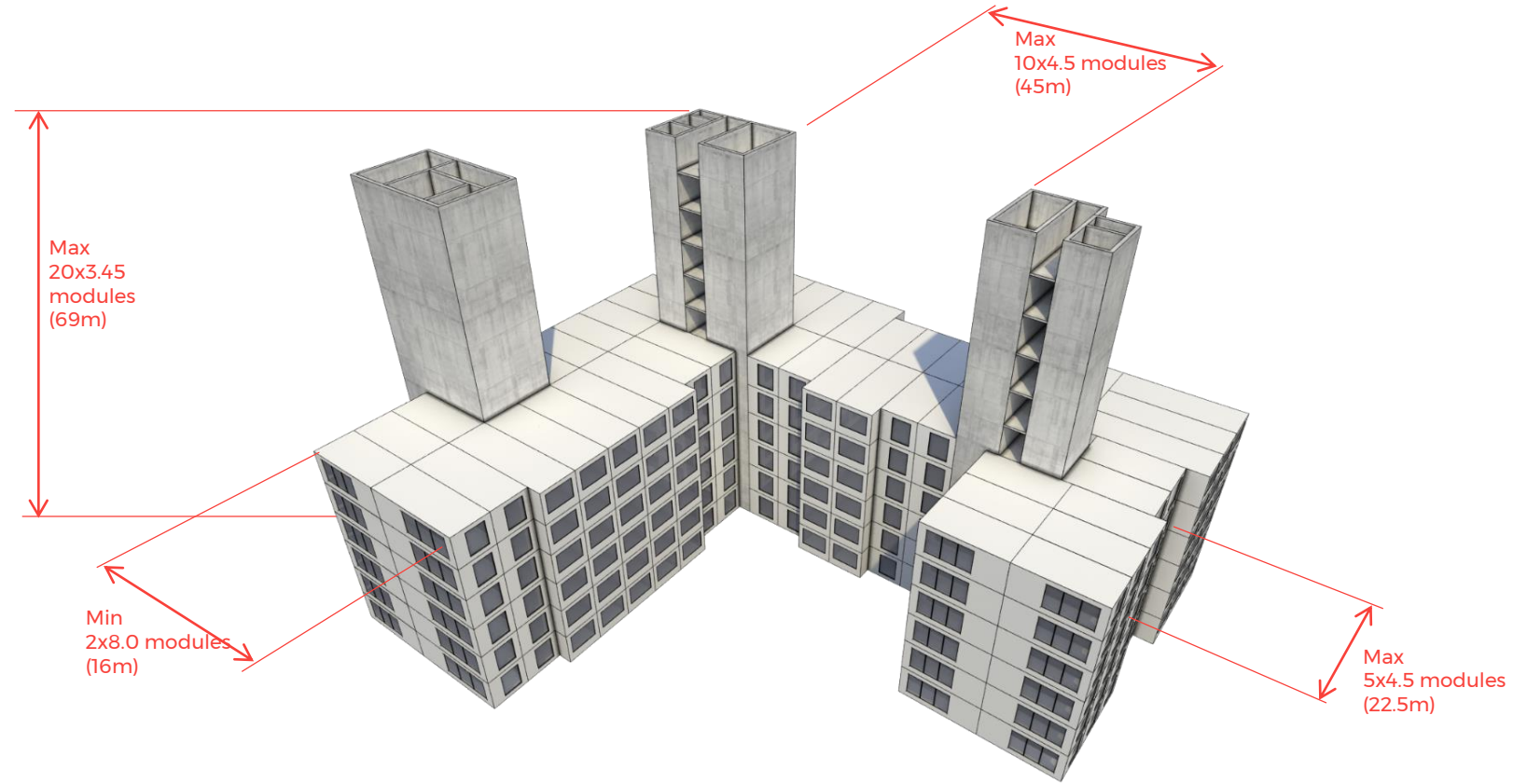
UNITE Design for a Production Line



UNITE MODULAR SOLUTIONS LTD

Stonehouse, Gloucestershire

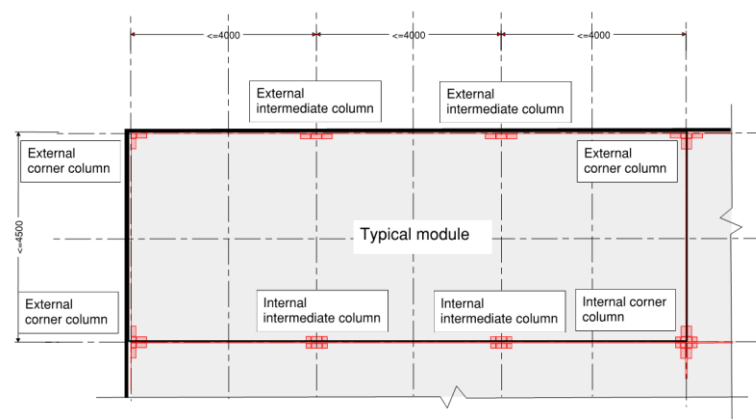
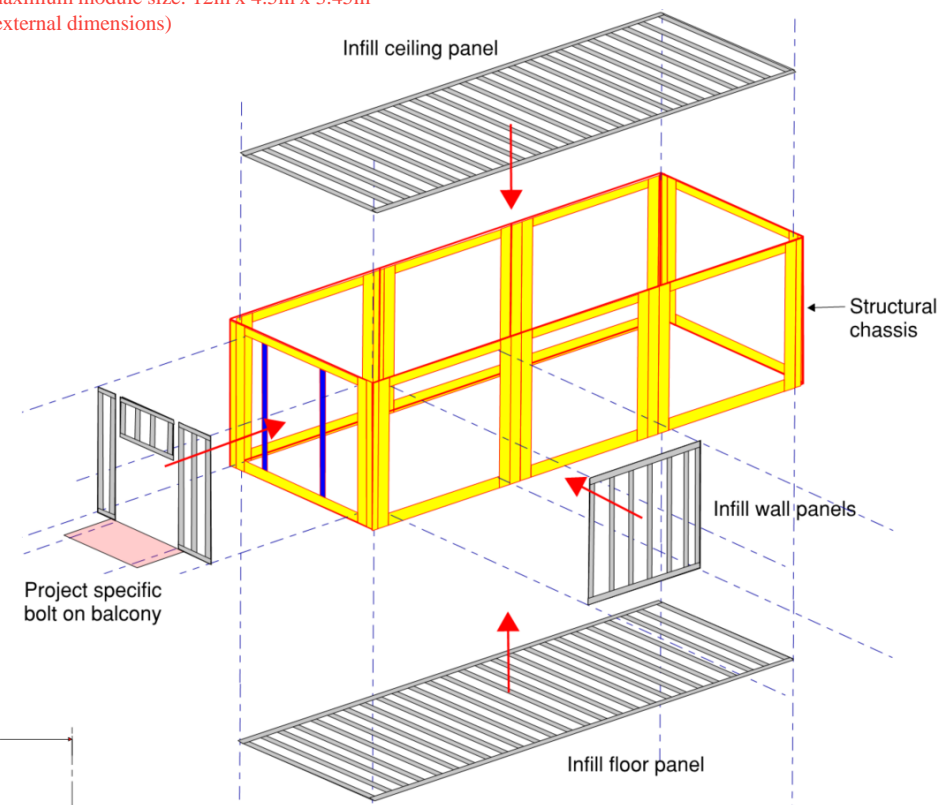
Recent System Development

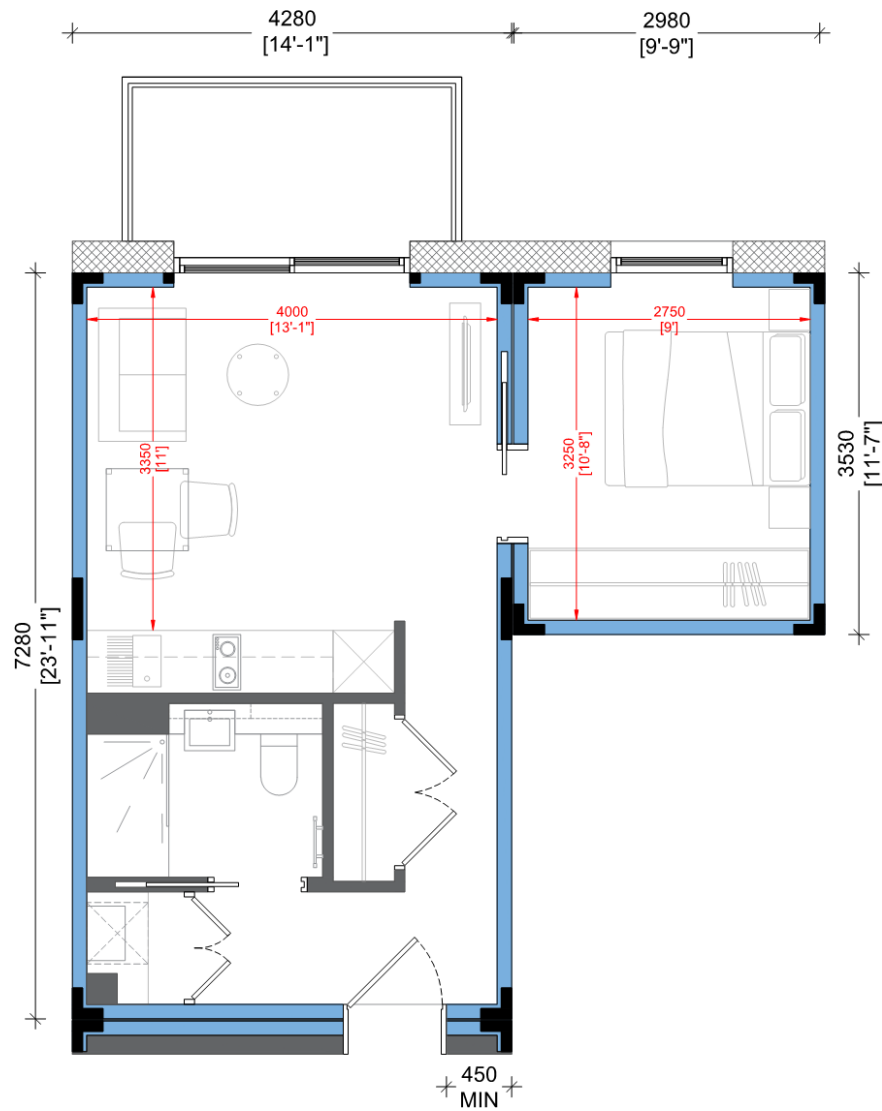


Module Configuration

Chassis Principle

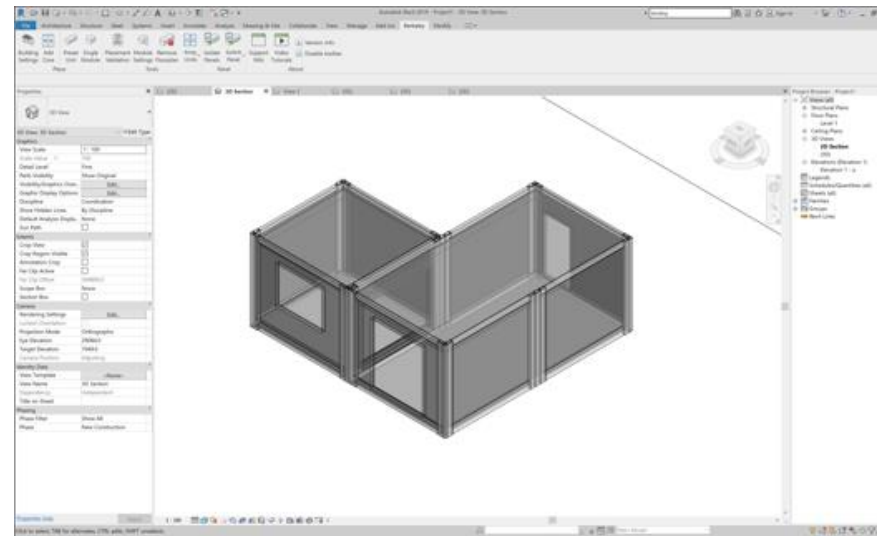
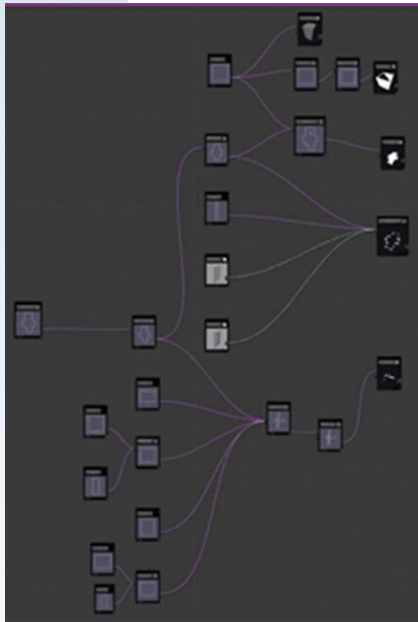
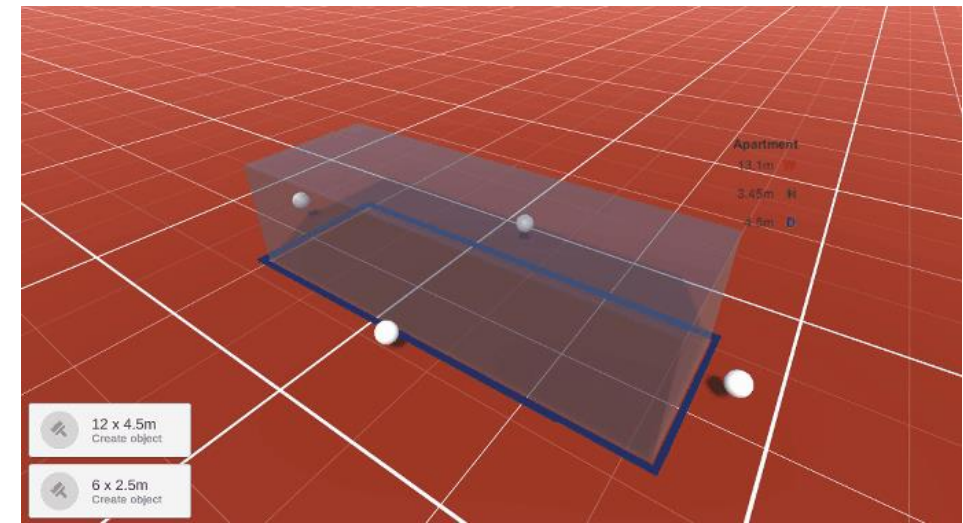
maximum module size: 12m x 4.5m x 3.45m
(external dimensions)





STUDIO – 37.91sqm / 408sqft

Digital Engineering



Macro Rethinking Offsite

Gatwick Airport
PIER 6 - WESTERN EXTENSION



Thank you

wsp.com