

SUSTAINABILITY IN PRACTICE

Going Off-Site in Support of Sustainability

AGENDA

- **Introduction**
- **Marks and Spencer's 'Plan A' (M & S)**
- **A Business Case for Sustainability (N.G. Bailey)**
- **Sustainability Through Construction Process Efficiency (Crown House)**
- **Halving Waste to Landfill (WRAP)**

TODAY'S CONTEXT

- **Two key issues of business conversation....the Recession and Sustainability**
- **There is huge Government engagement, yielding a background of initiatives and regulatory 'ratcheting'**
- **New-Build is important..... but retro-fit dominates**
- **Reducing waste pervades all aspects of sustainable building – including design; construction; and operational use.**
- **A key focus for our thinking, therefore, must be lean, efficient, use of skills and resources at all stages of the building cycle**



ARUP

The Ability to Deliver Step Change!







The Critical Importance of Design Quality

ARUP



ARUP

Nature's Hand





ARUP



ARUP



ARUP



ARUP

Natural Environment and Construction Quality





ARUP



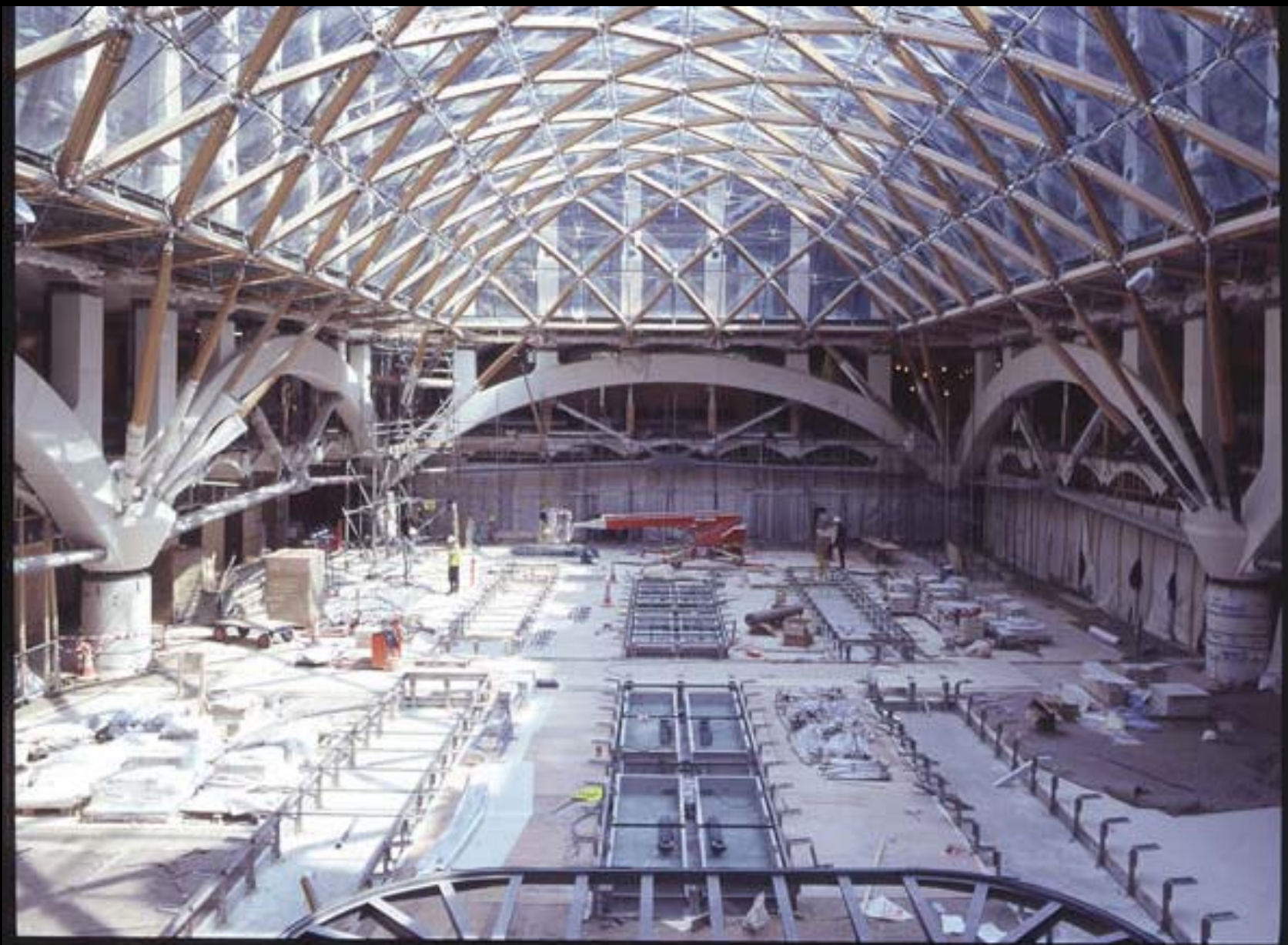
ARUP



ARUP



ARUP



ARUP



ARUP



**Not Everyone Can
Afford all this.....!**